



**BUILDING CODE COMPLIANCE OFFICE (BCCO)  
PRODUCT CONTROL DIVISION**

**MIAMI-DADE COUNTY, FLORIDA  
METRO-DADE FLAGLER BUILDING**

**140 WEST FLAGLER STREET, SUITE 1603  
MIAMI, FLORIDA 33130-1563  
(305) 375-2901 FAX (305) 375-2908**

**[www.buildingcodeonline.com](http://www.buildingcodeonline.com)**

**NOTICE OF ACCEPTANCE (NOA)**

**Fort Hurricane Products, Inc.  
1100 25<sup>TH</sup> Street (Unit 7 A)  
West Palm Beach, Florida 33407**

**SCOPE:**

This NOA is being issued under the applicable rules and regulations governing the use of construction materials. The documentation submitted has been reviewed by Miami-Dade County Product Control Division and accepted by the Board of Rules and Appeals (BORA) to be used in Miami Dade County and other areas where allowed by the Authority Having Jurisdiction (AHJ).

This NOA shall not be valid after the expiration date stated below. The Miami-Dade County Product Control Division (In Miami Dade County) and/or the AHJ (in areas other than Miami Dade County) reserve the right to have this product or material tested for quality assurance purposes. If this product or material fails to perform in the accepted manner, the manufacturer will incur the expense of such testing and the AHJ may immediately revoke, modify, or suspend the use of such product or material within their jurisdiction. BORA reserves the right to revoke this acceptance, if it is determined by Miami-Dade County Product Control Division that this product or material fails to meet the requirements of the applicable building code.

This product is approved as described herein, and has been designed to comply with the High Velocity Hurricane Zone of the Florida Building Code.

**DESCRIPTION: 280P / Operable Impact Resistant Window Screen**

**APPROVAL DOCUMENT:** Drawing No. HSS0001, titled "280P / Egress Operable Impact Resistant Window Screen", sheets 1 through 5 of 5, prepared by PTC Engineering, Inc., dated April 19, 2005, last revision #A dated July 06, 2005, signed and sealed by L. Roberto Lomas, P.E., bearing the Miami-Dade County Product Control Approval stamp with the Notice of Acceptance number and approval date by the Miami-Dade County Product Control Division.

**MISSILE IMPACT RATING: Large and Small Missile Impact**

**LABELING:** Each unit shall bear a permanent label with the manufacturer's name or logo, city, state and the following statement: "Miami-Dade County Product Control Approved", unless otherwise noted herein.

**RENEWAL** of this NOA shall be considered after a renewal application has been filed and there has been no change in the applicable building code negatively affecting the performance of this product.

**TERMINATION** of this NOA will occur after the expiration date or if there has been a revision or change in the materials, use, and/or manufacture of the product or process. Misuse of this NOA as an endorsement of any product, for sales, advertising or any other purposes shall automatically terminate this NOA. Failure to comply with any section of this NOA shall be cause for termination and removal of NOA.

**ADVERTISEMENT:** The NOA number preceded by the words Miami-Dade County, Florida, and followed by the expiration date may be displayed in advertising literature. If any portion of the NOA is displayed, then it shall be done in its entirety.

**INSPECTION:** A copy of this entire NOA shall be provided to the user by the manufacturer or its distributors and shall be available for inspection at the job site at the request of the Building Official.

This NOA consists of this page 1, evidence submitted page (s) as well as approval document mentioned above. The submitted documentation was reviewed by **Helmy A. Makar, P.E.**



*Helmy A. Makar*  
08/11/2005

**NOA No 05-0520.02  
Expiration Date: 08/11/2010  
Approval Date: 08/11/2005  
Page 1**

**Fort Hurricane Products, Inc.**

**NOTICE OF ACCEPTANCE: EVIDENCE SUBMITTED**

**A. DRAWINGS**

1. *Drawing No. HSS0001, titled " 280P / Egress Operable Impact Resistant Window Screen", sheets 1 through 5 of 5, prepared by PTC Engineering, Inc., dated April 19, 2005, last revision #A dated July 06, 2005, signed and sealed by L. Roberto Lomas, P.E.*

**B. TESTS**

1. *Test report on Large Missile Impact Test, Cyclic Wind Pressure Test and Uniform Static Air Pressure Test on " Impact Screen Window", prepared by Certified Testing Laboratories, Report No. CTLA 1366W, dated April 5, 2005, signed and sealed by Ramesh Patel, P.E.*
2. *Revised and marked up drawings from test lab (Certified Testing Laboratories).*

**C. CALCULATIONS**

1. *Anchor calculations prepared by PTC Engineering, Inc., dated May 13, 2005, sheets 1 through 7 of 7, signed and sealed by L. Roberto Lomas, P.E.*
2. *Revised Anchor calculation prepared by PTC Engineering, Inc., dated July 7, 2005, sheets 1 through 7 of 7, signed and sealed by L. Roberto Lomas, P.E.*

**D. QUALITY ASSURANCE**

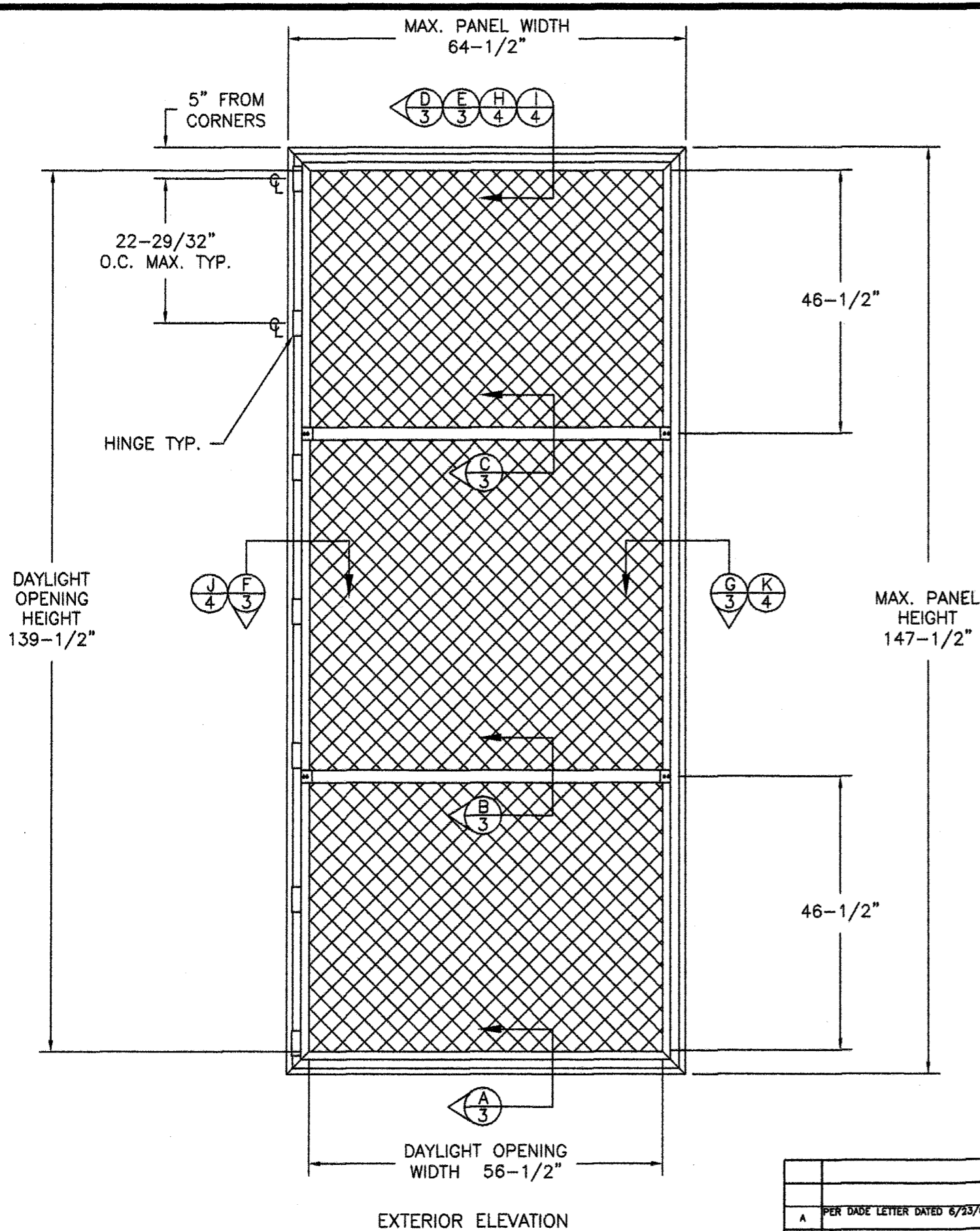
1. *By Miami-Dade County Building Code Compliance Office.*

**E. MATERIAL CERTIFICATIONS**

1. *Die drawings.*



Helmy A. Makar, P. E.  
Product Control Examiner  
NOA No 05-0520.02  
Expiration Date: 08/11/2010  
Approval Date: 08/11/2005



**GENERAL NOTES:**

1. THE PRODUCT SHOWN HEREIN IS DESIGNED AND MANUFACTURED TO COMPLY WITH THE 2001 AND 2004 "HVHZ" FLORIDA BUILDING CODE.
2. CONCRETE, MASONRY AND WOOD FRAMING TO BE DESIGNED AND ANCHORED TO PROPERLY TRANSFER ALL LOADS TO STRUCTURE. FRAMING IS THE RESPONSIBILITY OF THE ARCHITECT OR ENGINEER OF RECORD.
3. PANEL FRAME MATERIAL: ALUMINUM ALLOY 6005-T6.
4. A MINIMUM GLASS SEPARATION DISTANCE OF 4" SHALL BE PROVIDED FOR ALL INSTALLATIONS.

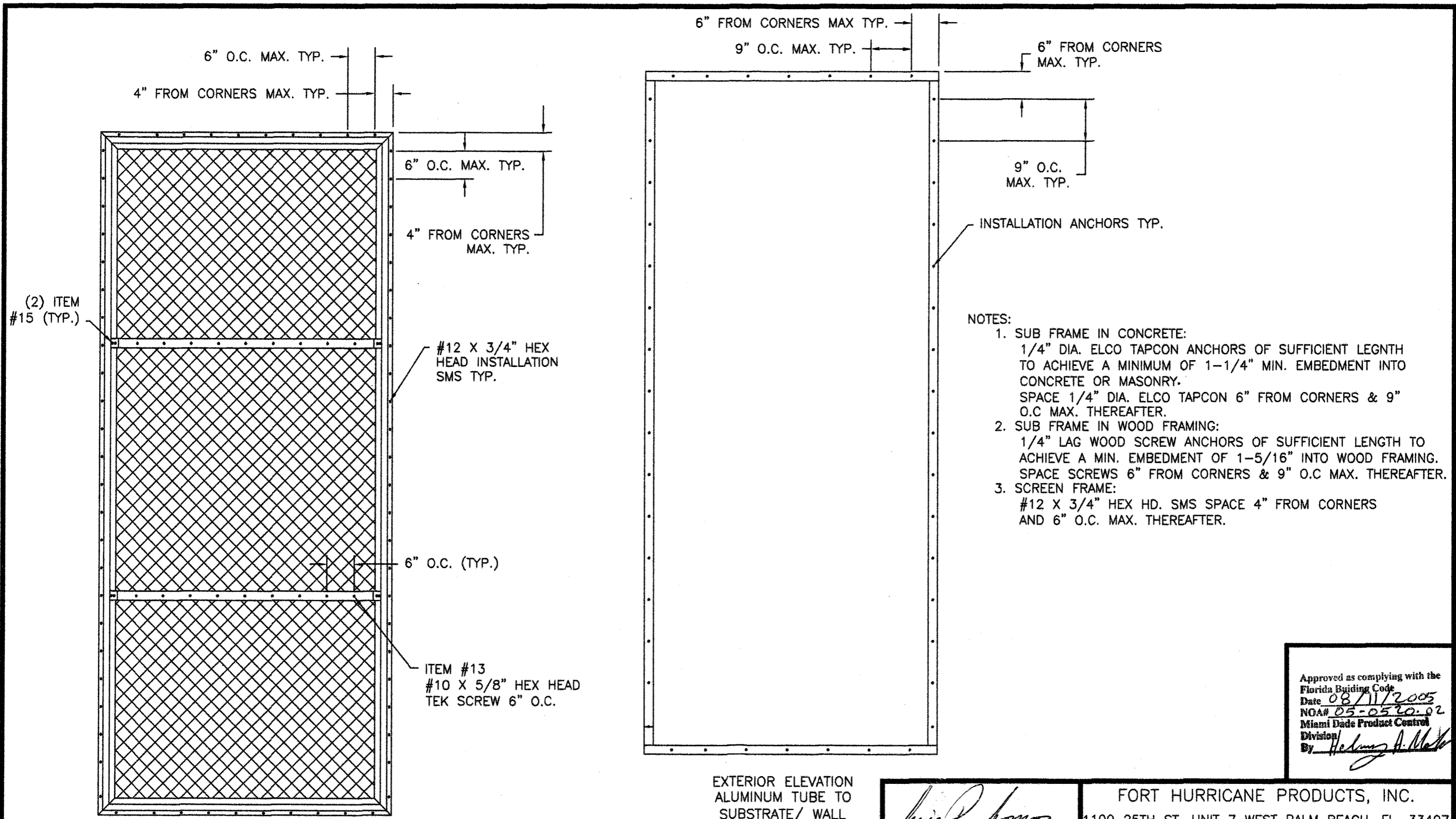
| TABLE OF CONTENT |   |
|------------------|---|
| SHEET            | DESCRIPTION                                   |
| 1                | ELEVATION NOTES                               |
| 2                | ANCHORING & NOTES                             |
| 3                | INSTALLATION DETAILS IN CONCRETE & WOOD FRAME |
| 4                | INSTALLATION DETAILS IN CONCRETE & WOOD FRAME |
| 5                | COMPONENTS & B.O.M.                           |

| MAXIMUM ALLOWABLE DESIGN PRESSURES |
|------------------------------------|
| W/2-1/2" MIN. EDGE DISTANCE        |
| +67.0 PSF                          |
| -76.0 PSF                          |

Approved as complying with the Florida Building Code  
 Date 08/11/2005  
 NOA# 05-0570-02  
 Miami Dade Product Control  
 Division  
 By Hedwig A. Meder

|  |  |                                     |
|--|--|-------------------------------------|
| <br>7/08/05  | <b>FORT HURRICANE PRODUCTS, INC.</b>   |                                     |
|  | 1100 25TH ST. UNIT 7A WEST PALM BEACH, FL. 33407<br>TITLE: 280P/ EGRESS OPERABLE IMPACT RESISTANT WINDOW SCREEN<br>ELEVATION & NOTES |                                     |
| PREPARED BY:<br><br>PTC ENGINEERING, INC.  | DRN: BB<br>DATE: 4/19/05   | SCALE: N.T.S.<br>DWG. NO: HSS0001   |
| L. Roberto Lomas, P.E.<br>Florida P. E. No. 62514<br>PTC Engineering, Inc.<br>2361 S.E. Seafury Lane<br>Port St. Lucie, Florida 34952<br>FBPE Certificate of Authorization NO. 25935 | REV: A<br>SHEET: 1 OF 5  | Phone 772.398.4639 Fax 772.398.4654 |

| SYM | REVISION                      | DATE     | BY |
|-----|-------------------------------|----------|----|
| A   | PER DADE LETTER DATED 6/23/05 | 07/08/05 | BB |



- NOTES:
1. SUB FRAME IN CONCRETE:  
1/4" DIA. ELCO TAPCON ANCHORS OF SUFFICIENT LENGTH TO ACHIEVE A MINIMUM OF 1-1/4" MIN. EMBEDMENT INTO CONCRETE OR MASONRY.  
SPACE 1/4" DIA. ELCO TAPCON 6" FROM CORNERS & 9" O.C. MAX. THEREAFTER.
  2. SUB FRAME IN WOOD FRAMING:  
1/4" LAG WOOD SCREW ANCHORS OF SUFFICIENT LENGTH TO ACHIEVE A MIN. EMBEDMENT OF 1-5/16" INTO WOOD FRAMING.  
SPACE SCREWS 6" FROM CORNERS & 9" O.C. MAX. THEREAFTER.
  3. SCREEN FRAME:  
#12 X 3/4" HEX HD. SMS SPACE 4" FROM CORNERS AND 6" O.C. MAX. THEREAFTER.

Approved as complying with the Florida Building Code  
 Date 08/11/2005  
 NOA# 05-0520-02  
 Miami Dade Product Control Division  
 By *Helmut A. Mehl*

EXTERIOR ELEVATION PANEL TO ALUMINUM TUBE ANCHORING

EXTERIOR ELEVATION ALUMINUM TUBE TO SUBSTRATE/ WALL ANCHORING

| SYM | REVISION                       | DATE     | BY |
|-----|--------------------------------|----------|----|
| A   | PER DADE LETTER DATED 06/??/05 | 07/06/05 | BB |

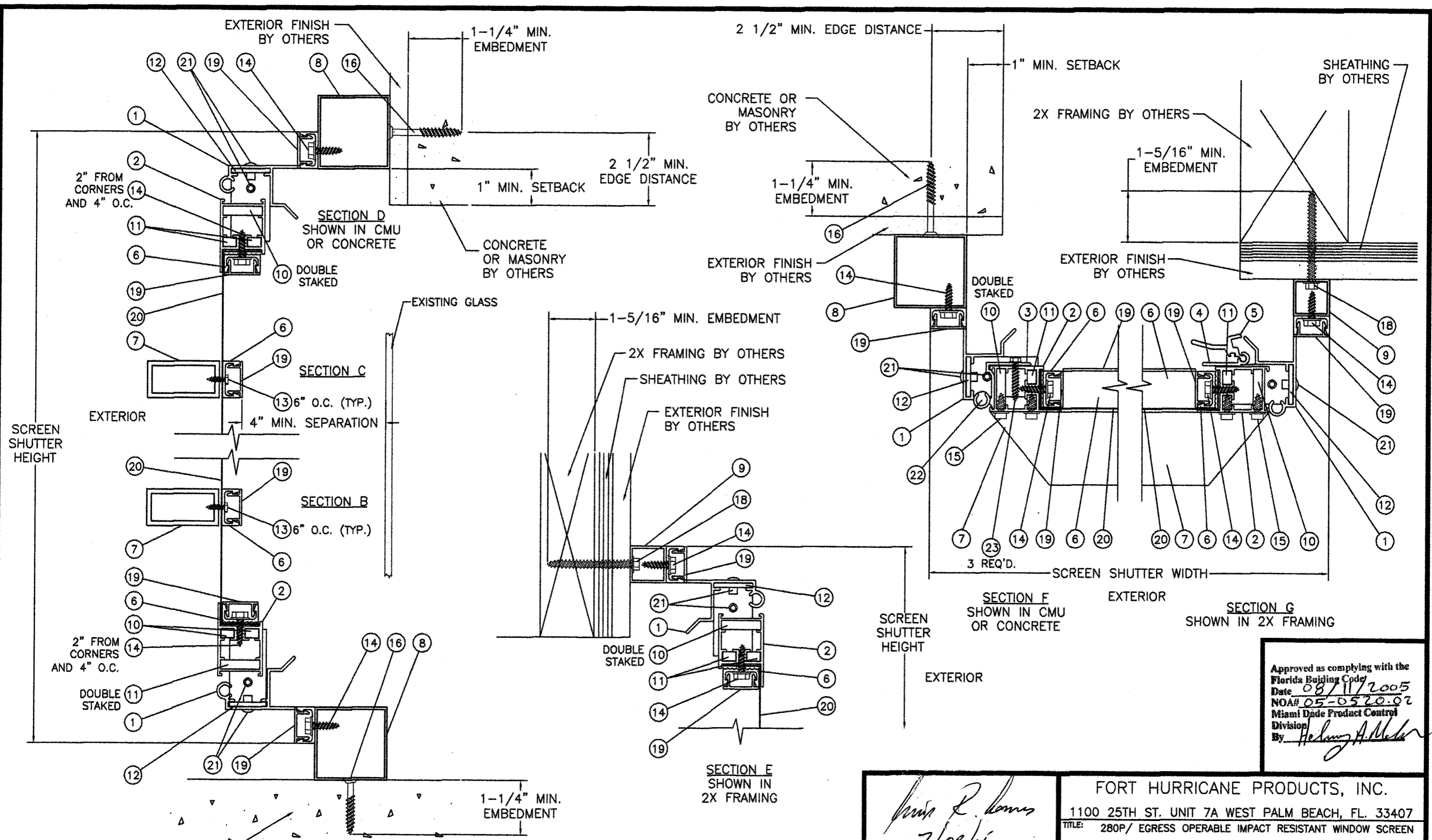
*Luis R. Lomas*  
 7/08/05  
 L. Roberto Lomas, P.E.  
 Florida P. E. No. 62514  
 PTC Engineering, Inc.  
 2361 S.E. Seafury Lane  
 Port St. Lucie, Florida 34952  
 FBPE Certificate of Authorization NO. 25935

FORT HURRICANE PRODUCTS, INC.  
 1100 25TH ST. UNIT 7 WEST PALM BEACH, FL. 33407  
 TITLE: 280P/ EGRESS OPERABLE IMPACT RESISTANT WINDOW SCREEN

ANCHORING & NOTES

PREPARED BY: **PTC** PTC ENGINEERING, INC.  
 Phone 772.398.4639 Fax 772.398.4654

|        |        |           |         |
|--------|--------|-----------|---------|
| DRN:   | BB     | DATE:     | 4/19/05 |
| SCALE: | N.T.S. | DWG. NO.: | HSS0001 |
| REV:   | A      | SHEET:    | 2 OF 5  |

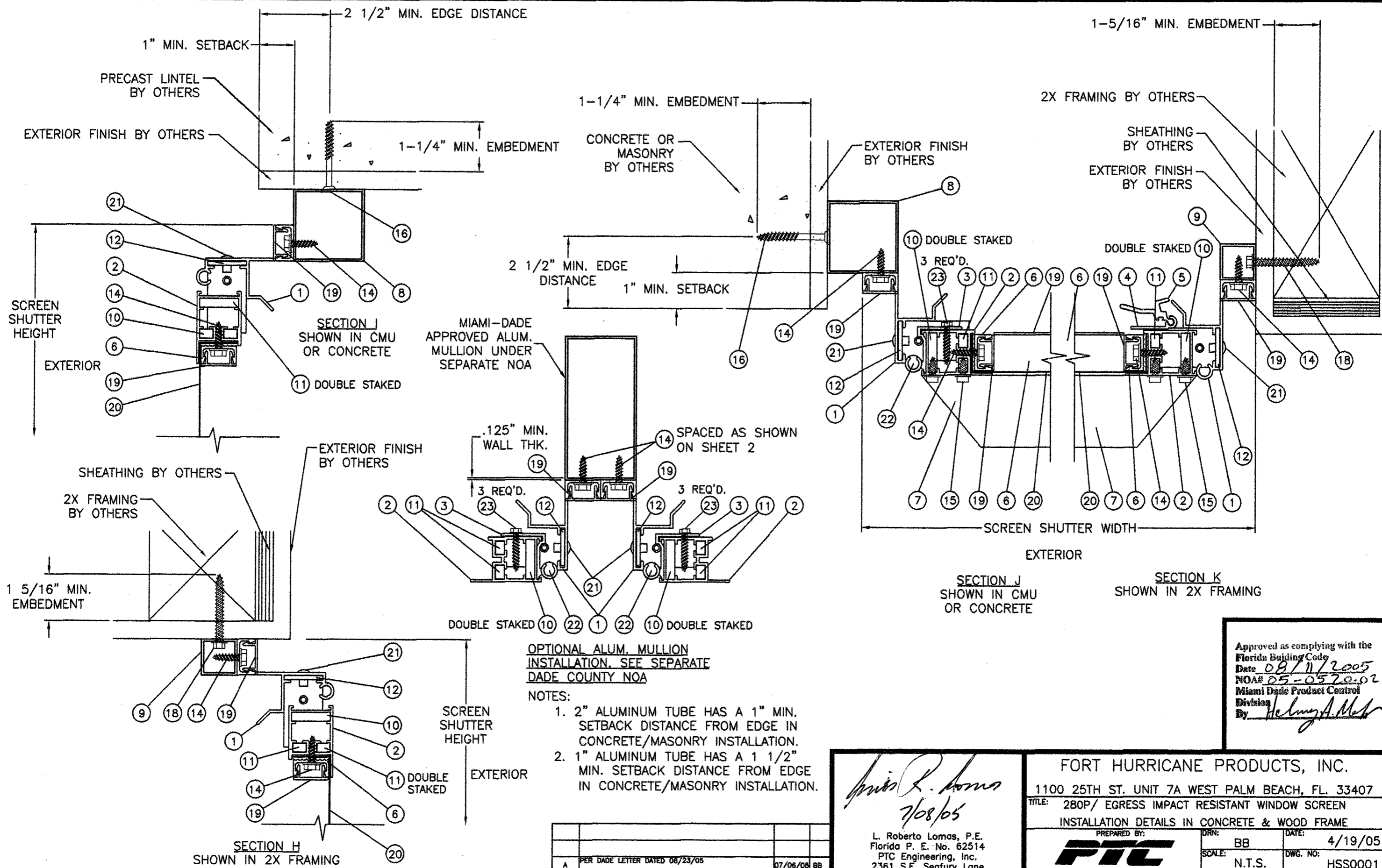


Approved as complying with the Florida Building Code  
 Date 08/11/2005  
 NOA# 05-0520-02  
 Miami Dade Product Control Division  
 By Heung A. Meder

*L. Roberto Lomas*  
 7/08/05  
 L. Roberto Lomas, P.E.  
 Florida P. E. No. 62514  
 PTC Engineering, Inc.  
 2361 S.E. Seafury Lane  
 Port St. Lucie, Florida 34952  
 FBPE Certificate of Authorization NO. 25935

FORT HURRICANE PRODUCTS, INC.  
 1100 25TH ST. UNIT 7A WEST PALM BEACH, FL. 33407  
 TITLE: 280P/ EGRESS OPERABLE IMPACT RESISTANT WINDOW SCREEN  
 INSTALLATION DETAILS IN CONCRETE & WOOD FRAME  
 PREPARED BY: **PTC** PTC ENGINEERING, INC.  
 DRN: BB DATE: 4/19/05  
 SCALE: N.T.S. DWG. NO: HSS0001  
 REV: A SHEET: 3 OF 5

| SYM | REVISION                       | DATE     | BY |
|-----|--------------------------------|----------|----|
| A   | PER DADE LETTER DATED 08/23/05 | 08/23/05 | BB |



OPTIONAL ALUM. MULLION  
INSTALLATION. SEE SEPARATE  
DADE COUNTY NOA

NOTES:  
1. 2" ALUMINUM TUBE HAS A 1" MIN.  
SETBACK DISTANCE FROM EDGE IN  
CONCRETE/MASONRY INSTALLATION.  
2. 1" ALUMINUM TUBE HAS A 1 1/2"  
MIN. SETBACK DISTANCE FROM EDGE  
IN CONCRETE/MASONRY INSTALLATION.

Approved as complying with the  
Florida Building Code  
Date 08/11/2005  
NOA# 05-0570-02  
Miami Dade Product Control  
Division  
By Helmy A. Mab

*L. Roberto Lomas*  
7/08/05

L. Roberto Lomas, P.E.  
Florida P. E. No. 62514  
PTC Engineering, Inc.  
2361 S.E. Seafury Lane  
Port St. Lucie, Florida 34952  
FBPE Certificate of Authorization NO. 25935

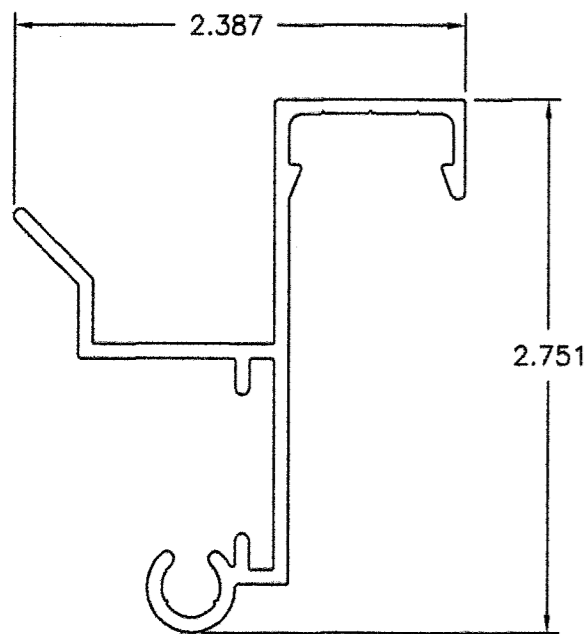
FORT HURRICANE PRODUCTS, INC.  
1100 25TH ST. UNIT 7A WEST PALM BEACH, FL. 33407  
TITLE: 280P/ EGRESS IMPACT RESISTANT WINDOW SCREEN  
INSTALLATION DETAILS IN CONCRETE & WOOD FRAME

PREPARED BY: **PTC** PTC ENGINEERING, INC.  
Phone 772.398.4639 Fax 772.398.4654

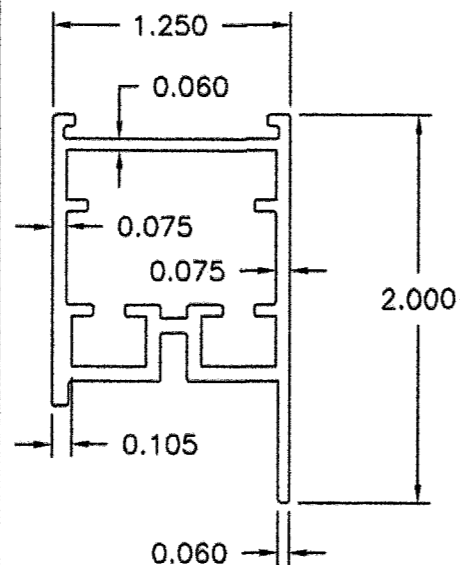
|               |                  |
|---------------|------------------|
| DRN: BB       | DATE: 4/19/05    |
| SCALE: N.T.S. | DWG. NO: HSS0001 |
| REV: A        | SHEET: 4 OF 5    |

| SYM | REVISION                       | DATE     | BY |
|-----|--------------------------------|----------|----|
| A   | PER DADE LETTER DATED 06/23/05 | 07/06/05 | BB |

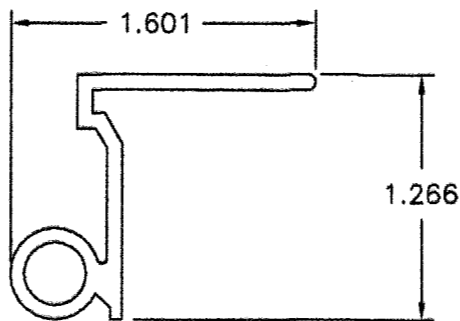
① FRAME HEAD, SILL & JAMB  
TYP. WALL THICKNESS 0.075



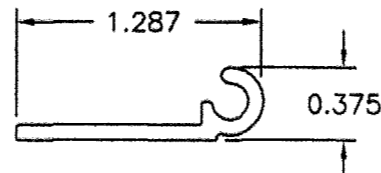
② VENT HEAD, SILL & JAMB  
TYP. WALL THICKNESS 6005-T6



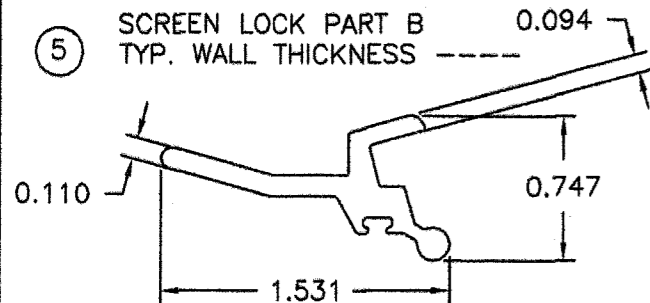
③ SCREEN HINGE  
TYP. WALL THICKNESS 0.078  
6005-T6



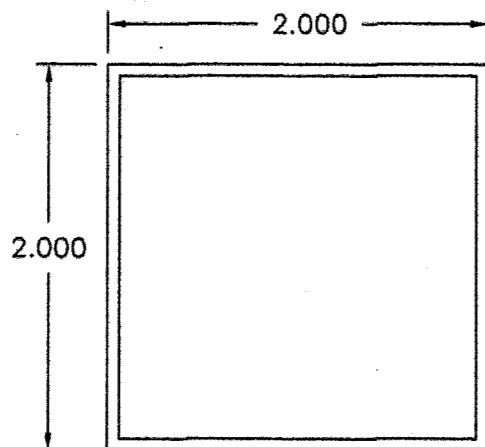
④ SCREEN LOCK PART A  
TYP. WALL THICKNESS 0.078



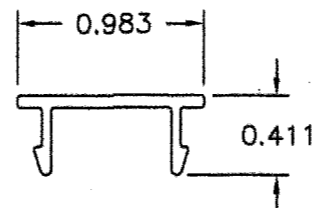
⑤ SCREEN LOCK PART B  
TYP. WALL THICKNESS 0.094



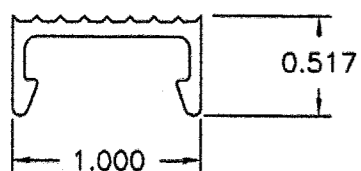
⑧ 2" X 2" ALUMINUM TUBE  
TYP. WALL THICKNESS 0.062



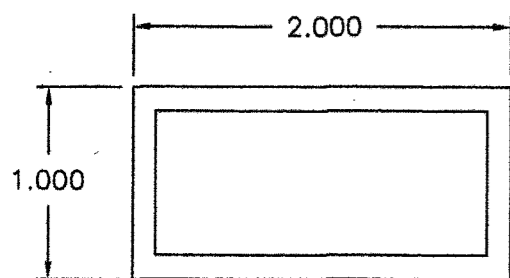
⑱ SCREEN COVER  
TYP. WALL THICKNESS 0.050



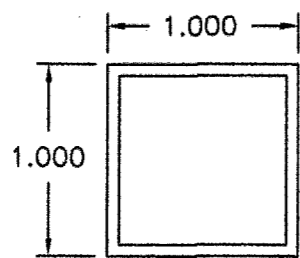
⑥ WIRE RETAINER  
TYP. WALL THICKNESS 0.075



⑦ 1" X 2" ALUMINUM TUBE  
TYP. WALL THICKNESS 0.125



⑨ 1" X 1" ALUMINUM TUBE  
TYP. WALL THICKNESS 0.062



BILL OF MATERIALS

| ITEM # | PART # | DESCRIPTION  |
|--------|--------|--|
| 1      | 2726   | FRAME HEAD, SILL & JAMB 6005-T6 ALUMINUM                 |
| 2      | 2711   | VENT HEAD, SILL & STILE 6005-T6 ALUMINUM                 |
| 3      | 2733   | SCREEN HINGE 6005-T6 ALUMINUM                            |
| 4      | 2724   | SNAP LOCK PART A 6005-T6 ALUMINUM                        |
| 5      | 2725   | SNAP LOCK PART B 6005-T6 ALUMINUM                        |
| 6      | 2721   | WIRE RETAINER 6005-T6 ALUMINUM                           |
| 7      |        | 1" X 2" X 1/8" ALUMINUM TUBE 6063-T5 ALUMINUM            |
| 8      |        | 2" X 2" X 1/16" ALUMINUM TUBE 6063-T5 ALUMINUM           |
| 9      |        | 1" X 1" & 1" X 2" X 1/16" ALUMINUM TUBE 6063-T5 ALUMINUM |
| 10     |        | OUTER VENT CORNER KEY 2" X 2" X 1.1 X 1/4" 6061-T6       |
| 11     |        | INNER VENT CORNER KEY 2" X 2" X .400 X 1/8" 6061-T6      |
| 12     |        | SUB FRAME ANGLE CORNER KEY 2" X 2" X 1/8" 6061-T6        |
| 13     |        | #10 X 5/8" TEK SCREW                                     |
| 14     |        | #12 -14 X 3/4" HEX HEAD SMS                              |
| 15     |        | #14 X 1/2" HEX HEAD SELF TAPPING FASTENER                |
| 16     |        | 1/4" X 2-1/4" TAPCON                                     |
| 17     |        | NOT USED   |
| 18     |        | 1/4" LAG SCREW   |
| 19     | 2730   | SCREW COVER  |
| 20     |        | MESH 12 X 12 SCREEN SS 304 THREAD 0.028" OR 0.032" THICK |
| 21     |        | 1/8" POP RIVET   |
| 22     |        | SPRING LOADED HINGE PIN ASSEMBLY                         |
| 23     |        | #12 X 1" HEX HEAD SELF TAPPING SMS                       |

Approved as complying with the  
Florida Building Code  
Date 08/11/2005  
NOA# 05-0520.02  
Miami Dade Product Control  
Division  
By Helmut A. M...

*L. Roberto Lomas*  
7/19/05

L. Roberto Lomas, P.E.  
Florida P. E. No. 62514  
PTC Engineering, Inc.  
2361 S.E. Seafury Lane  
Port St. Lucie, Florida 34952  
FBPE Certificate of Authorization NO. 25935

FORT HURRICANE PRODUCTS, INC.  
1100 25TH ST. UNIT 7A WEST PALM BEACH, FL. 33407  
TITLE: 280P/ EGRESS IMPACT RESISTANT WINDOW SCREEN  
BILL OF MATERIALS & COMPONENTS

|   |                  |               |
|---|------------------|---------------|
| PREPARED BY:<br><b>PTC</b><br>PTC ENGINEERING, INC. | DRN: BB          | DATE: 4/19/05 |
| SCALE: N.T.S.                                       | DWG. NO: HSS0001 |               |
| REV: A  | SHEET: 5 OF 5    |               |

|     |                                |          |    |
|-----|--------------------------------|----------|----|
|     |                                |          |    |
| A   | PER DADE LETTER DATED 06/23/05 | 07/06/05 | BB |
| SYM | REVISION                       | DATE     | BY |